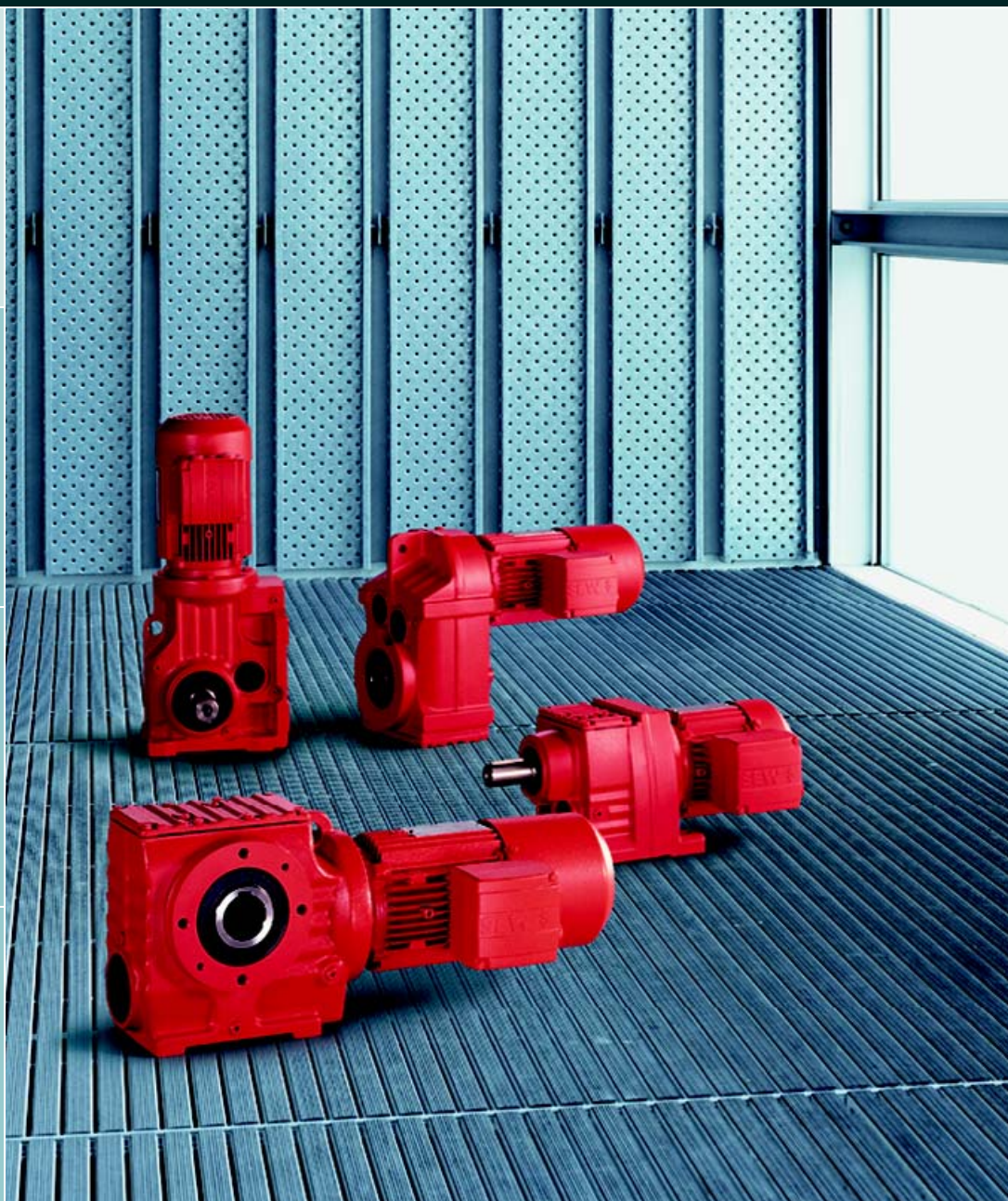
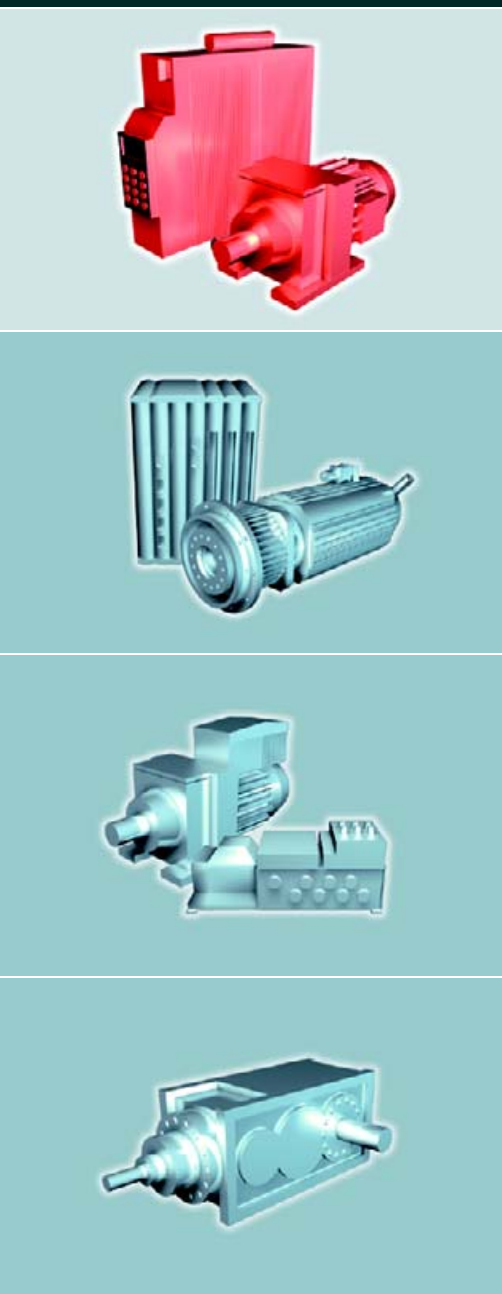




SEW
EURODRIVE



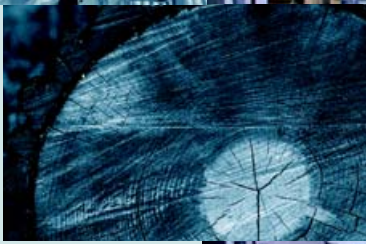
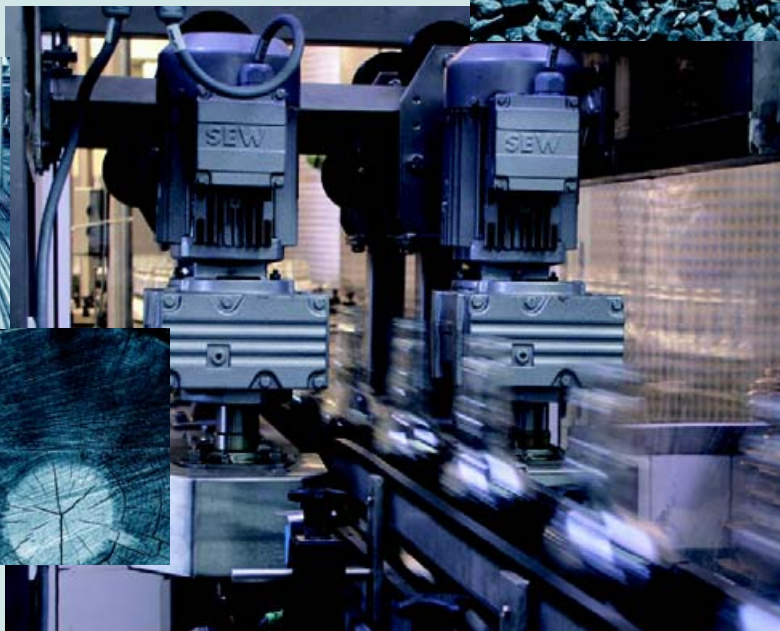
Gearmotors

A3.D01

Edition 04/2004

11225610 / EN

Catalog





	1	The SEW-EURODRIVE Group of Companies	6	1
	2	Product Description and Overview of Types.....	8	2
	3	Project Planning for Drives	29	3
	4	Project Planning for Gear Units.....	32	4
	5	Mounting Positions and Important Order Information	44	5
	6	Design and Operating Notes.....	71	6
	7	Important Information, Tables and Dimension Sheets.....	99	7
	8	Helical Gearmotors	105	8
	9	Parallel Shaft Helical Gearmotors	247	9
	10	Helical-Bevel Gearmotors	369	10
	11	Spiroplan® Gearmotors	491	11
	12	Helical-Worm Gearmotors.....	507	12
	13	Project Planning for AC Motors.....	609	13
	14	Mounting Positions, Technical Data and Dimension Sheets for AC Motors....	668	14
	15	Abbreviation Key and Index.....	767	15



1	The SEW-EURODRIVE Group of Companies	6
2	Product Description and Overview of Types	8
2.1	General information	8
2.2	Gearmotor versions	9
2.3	Explosion protection to ATEX	18
2.4	Energy efficient motors	19
2.5	Unit designations for gear units and options	20
2.6	Unit designation for AC motors and options	22
2.7	Corrosion and surface protection	24
2.8	Extended storage	26
2.9	Drives for aseptic environments	27
2.10	Sample unit designation of a gearmotor	28
3	Project Planning for Drives	29
3.1	Additional documentation	29
3.2	Drive selection data	30
3.3	Project planning process	31
4	Project Planning for Gear Units	32
4.1	Efficiency of gear units	32
4.2	Service factor	34
4.3	Overhung loads and axial forces	36
4.4	RM gear units	40
4.5	Drives for overhead trolley systems	43
5	Mounting Positions and Important Order Information	44
5.1	General information on mounting positions	44
5.2	Important order information	45
5.3	Key to the mounting position sheets	48
5.4	Mounting positions for helical gearmotors	49
5.5	Mounting positions for parallel shaft helical gearmotors	54
5.6	Mounting positions for helical-bevel gearmotors	57
5.7	Mounting positions for Spiroplan® gearmotors	62
5.8	Mounting positions for helical-worm gearmotors	65
6	Design and Operating Notes	71
6.1	Lubricants	71
6.2	Installation/removal of gear units with hollow shafts and keys	77
6.3	Gear units with hollow shaft	80
6.4	TorqLOC® mounting system for gear units with hollow shaft	81
6.5	Option, offset hollow shaft with shrink disk	83
6.6	Adapter for installation of IEC motors	90
6.7	Adapter for installation of servomotors	93
6.8	Flange contours of RF.. and R..F gearmotors	96
6.9	Fastening of gear units	97
6.10	Torque arms	97
6.11	Fixed covers	98
7	Important Information, Tables and Dimension Sheets	99
7.1	Possible geometrical combinations	99
7.2	Selection tables for R, F, K and S gearmotors	100
7.3	Selection table for W gearmotors	101
7.4	Notes on dimension sheets	102
8	Helical Gearmotors	105
8.1	Designs	105
8.2	Possible physical combinations	106
8.3	Selection tables	133
8.4	Selection tables for particularly low output speeds	196
8.5	Dimension sheets	206
9	Parallel Shaft Helical Gearmotors	247
9.1	Designs	247
9.2	Possible physical combinations	249
9.3	Selection tables	270
9.4	Selection tables for particularly low output speeds	307
9.5	Dimension sheets	316
10	Helical-Bevel Gearmotors	369
10.1	Designs	369
10.2	Possible physical combinations	371
10.3	Selection tables	387
10.4	Selection tables for particularly low output speeds	429
10.5	Dimension sheets	439



11	Spiroplan® Gearmotors.....	491	
	11.1 Designs	491	1
	11.2 Possible physical combinations.....	492	2
	11.3 Selection tables.....	493	3
	11.4 Dimension sheets.....	497	4
12	Helical-Worm Gearmotors	507	
	12.1 Designs	507	5
	12.2 Possible physical combinations.....	509	6
	12.3 Selection tables.....	519	7
	12.4 Selection tables for particularly low output speeds	539	8
	12.5 Dimension sheets.....	545	9
	12.6 Technical data S, SF, SA, SAF 37	580	10
	12.7 Technical data S, SF, SA, SAF 47	584	11
	12.8 Technical data S, SF, SA, SAF 57	588	12
	12.9 Technical data S, SF, SA, SAF 67	592	13
	12.10 Technical data S, SF, SA, SAF 77	596	14
	12.11 Technical data S, SF, SA, SAF 87	600	15
	12.12 Technical data S, SF, SA, SAF 97	604	
13	Project Planning for AC Motors	609	
	13.1 Examples for different versions	609	
	13.2 Unit designation of AC (brake) motors	610	
	13.3 Available motor options.....	611	
	13.4 Standards and regulations	612	
	13.5 Explosion protection to ATEX.....	615	
	13.6 Circuit breaker and protective equipment.....	616	
	13.7 Electrical characteristics.....	618	
	13.8 Thermal characteristics	621	
	13.9 Starting frequency	623	
	13.10 Mechanical characteristics	625	
	13.11 Overhung loads.....	626	
	13.12 Special markets.....	628	
	13.13 Brakes	630	
	13.14 Block diagrams of brake control systems.....	642	
	13.15 Encoders and pre-fabricated cables for encoder connection	648	
	13.16 Forced cooling fan.....	652	
	13.17 Additional flywheel mass Z, backstop RS and protection cowl C.....	653	
	13.18 Low-noise fan guard.....	654	
	13.19 MOVIMOT®.....	655	
	13.20 MOVI-SWITCH®.....	656	
	13.21 Smooth pole-change unit WPU.....	660	
	13.22 ECOFAST® compliant AC Motors DT/DV..ASK1	661	
	13.23 Operation on inverter.....	663	
14	Mounting Positions, Technical Data and Dimension Sheets for AC Motors	668	
	14.1 Mounting position designations for AC motors.....	668	
	14.2 Technical data AC motors	669	
	14.3 Torque limit curves with inverter operation.....	679	
	14.4 Type code for SEW-EURODRIVE plug connectors	681	
	14.5 Technical data plug connectors.....	682	
	14.6 Technical data of encoders/encoder mounting adapters	690	
	14.7 Technical data on forced cooling fan.....	696	
	14.8 Technical data and dimension sheet for UWU51A switch-mode power supply ..	697	
	14.9 Dimension sheet notes for AC motors.....	698	
	14.10 Dimension sheets AC motors.....	699	
	14.11 Dimension sheet for AC motors with MOVI-SWITCH® MSW-2S option	758	
	14.12 Dimension sheets for AC motors with encoder mounting adapter	759	
	14.13 Technical data on additional flywheel mass Z and backstop RS	763	
	14.14 Dimensions of smooth pole-change unit WPU.....	764	
	14.15 Dimensions of brake control systems.....	765	
15	Abbreviation Key and Index	767	
	15.1 Abbreviation Key	767	
	15.2 Index.....	768	



1 The SEW-EURODRIVE Group of Companies

Introduction

SEW-EURODRIVE is a leading company in the global market for electrical drive engineering. Its global presence, extensive product range and broad spectrum of services make SEW-EURODRIVE the ideal partner for the machinery and plant construction industry when it comes to providing drive systems for demanding applications.

SEW-EURODRIVE possesses many years of experience in drive engineering which it puts to good use when developing, producing and selling all its drives with components drawn from mechanical and electrical engineering and electronics.

The company headquarters are in Bruchsal, Germany. Components for the SEW-EURODRIVE modular drive system are manufactured to the highest quality standards in production plants sited in Germany, France, Finland, the United States, Brazil and China. The individual drive systems are assembled with a consistently high quality standard and very short delivery times from stocked components in our assembly plants located in more than 30 industrialized countries all over the world. SEW-EURODRIVE sales, consulting, customer and spare parts services are available in more than 50 countries around the globe.

The product range

- Gearmotors, gear units and motors
 - Helical gear units/gearmotors
 - Parallel shaft helical gear units/gearmotors
 - Helical-bevel gear units/gearmotors
 - Helical-worm gear units/gearmotors
 - Spiroplan[®] right-angle gearmotors
 - Planetary gearmotors
 - Industrial gear units
 - Low backlash gear units/gearmotors
 - Energy efficient motors
 - Brake motors
 - Drives for overhead trolley systems
 - Geared torque motors
 - Pole-changing gearmotors
 - Aseptic gearmotors

- Electronically controlled drives
 - MOVITRAC[®] frequency inverters
 - MOVIDRIVE[®] drive inverters
 - MOVIDYN[®] servo controllers
 - Technology and communication options for the inverters
 - Asynchronous AC motors and AC gearmotors
 - Asynchronous and synchronous servomotors and geared servomotors
 - DC motors, brake motors and gearmotors
 - Asynchronous and synchronous linear motors

- Components for decentralized installation
 - MOVIMOT[®] gearmotors with integrated frequency inverter
 - MOVI-SWITCH[®] gearmotors with integrated switching and protection function
 - Field distributors, fieldbus interfaces



- Mechanical variable speed drives
 - VARIBLOC[®] wide V-belt variable speed gearmotors
 - VARIMOT[®] friction disk variable speed gearmotors

- Explosion-proof drives to ATEX 100a for category 2 and 3

- Services
 - Technical consulting
 - Application software
 - Seminars and training
 - Extensive technical documentation
 - Worldwide customer service

Content of the catalog

This catalog describes SEW-EURODRIVE AC gearmotors and brake motors. It contains project planning notes, mounting positions, technical data, selection tables and dimension sheets. Please refer to separate catalogs for more information about gear units, pole-changing gearmotors, variable speed gearmotors, geared servomotors and DC gearmotors.

Other catalogs

- Gear units
- Low backlash planetary gear units
- MOVIMOT[®] Gearmotors
- Geared servomotors
- DTE/DVE Energy efficient motors
- Pole-changing gearmotors
- Variable speed gearmotors
- Drives for overhead trolley systems
- Explosion-proof drives
- Geared torque motors
- Planetary gearmotors
- Compact gear units
- DAS Aseptic drives