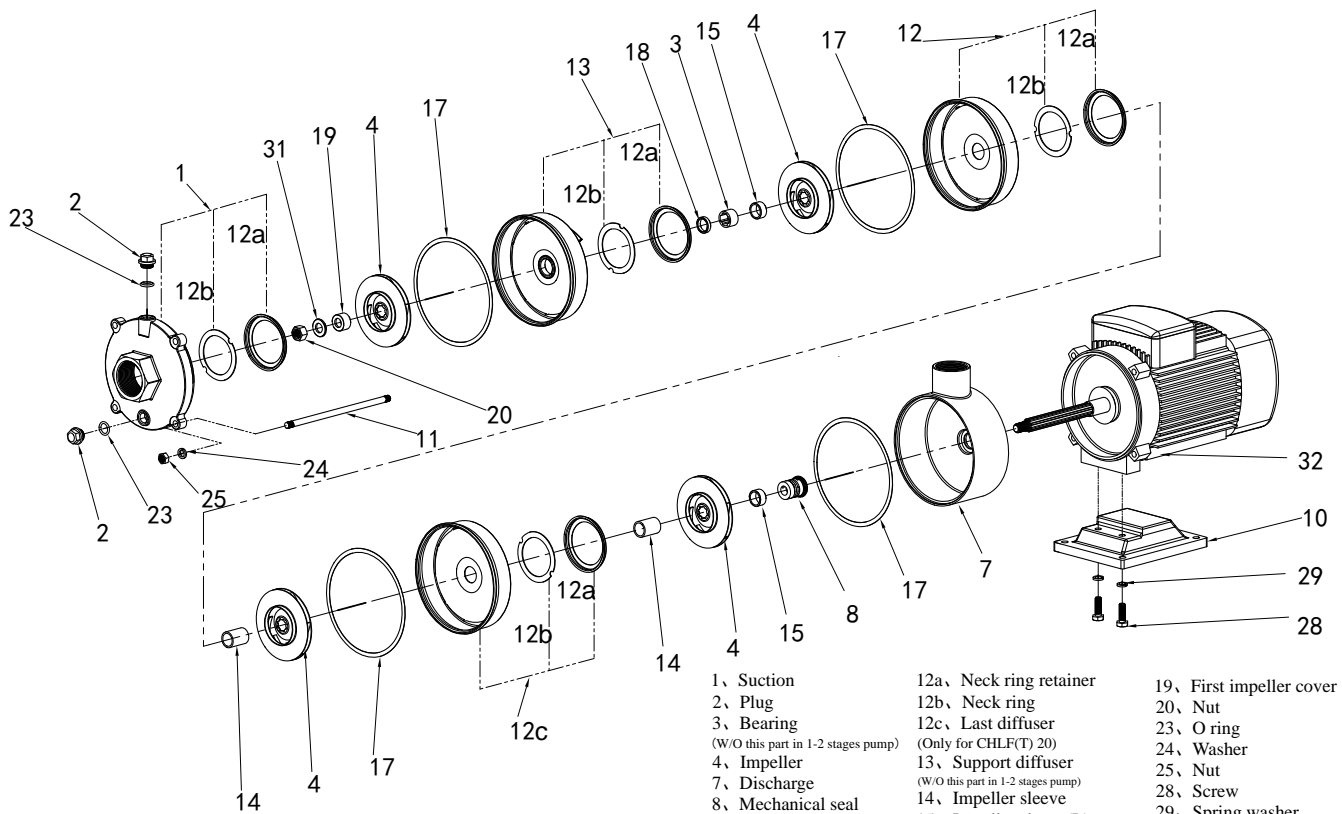


CHLF (T) 2、 4-080701

- | | | |
|------------------------------------|------------------------------------|-------------------|
| 1、 Suction | 13、 Support diffuser | 25、 Nut |
| 2、 Plug | (W/O this part in 2-3 stages pump) | 28、 Screw |
| 3、 Bearing | 14、 Impeller sleeve | 29、 Spring Washer |
| (W/O this part in 2-3 stages pump) | 15、 Sleeve 1 | 31、 Washer |
| 4、 Impeller | (W/O this part in CHLF(T)2) | 32、 Motor |
| 7、 Discharge | 17、 Seal ring | |
| 8、 Mechanical seal | 18、 Impeller sleeve(s) | |
| 10、 Base plate | (W/O this part in 2-3 stages pump) | |
| 11、 Staybolt | 19、 First impeller cover | |
| 12、 Diffuser | 20、 Nut | |
| 12a、 Neck ring retainer | 23、 O ring | |
| 12b、 Neck ring | 24、 Spring washer | |



CHLF (T) 8、12、16、20-080701

- | | | |
|------------------------------------|------------------------------------|--------------------------|
| 1、 Suction | 12a、 Neck ring retainer | 19、 First impeller cover |
| 2、 Plug | 12b、 Neck ring | 20、 Nut |
| 3、 Bearing | 12c、 Last diffuser | 23、 O ring |
| (W/O this part in 1-2 stages pump) | (Only for CHLF(T) 20) | 24、 Washer |
| 4、 Impeller | 13、 Support diffuser | 25、 Nut |
| | (W/O this part in 1-2 stages pump) | 28、 Screw |
| 7、 Discharge | 14、 Impeller sleeve | 29、 Spring washer |
| 8、 Mechanical seal | 15、 Impeller sleeve(L) | 31、 Washer |
| 10、 Base plate | (W/O this part in 1-2 stages pump) | 32、 Motor |
| 11、 Staybolt | 17、 Seal ring | |
| 12、 Diffuser | 18、 Impeller sleeve(S) | |
| (W/O this part in CHLF(T)20-1-3 | (W/O this part in 1-2 stages pump) | |
| stages pump) | | |